



Peninsula House

Designed By Sean Godsell

Drawn By Scott Beeby
s2806118
Griffith University

Advanced Presentation Skills
2906ENV
Assignment #4

Convenor: Alex Cohn

Table of Contents

Executive Summary..... Page 2

Architect Sean Godsell

 Background..... Page 3

 Previous Designs Page 3

 Original Sketches..... Page 3

Design Features

 Form..... Page 5

 Space Page 6-7

 Nature Page 8

 Movement..... Page 8

 Materials..... Page 9

My drawings

 Lower Level Plan..... Page 12

 Upper Level Plan..... Page 13

 Sections Page 13

 Elevations..... Page 14

 Orthographic View..... Page 15

Conclusion..... Page 17

Design Photos..... Page 18-19

Executive Summary

This design report shows the main elements of the Peninsula House, my personal interpretations of the design along with my own drawings.

The architect Sean Godsell and his other work are discussed and the major features of the design are displayed, these include: form, space, nature, movement and materials.

Based on tradition Chinese architecture the Peninsula House is flexible in form, a shelter from the harshest elements while still being gentle to the occupants. The 30m long structure is implanted in a sand dune situated on a site with many native trees and orientated north away from the sea.

It features a box like frame surrounded by vertical timber battens to create a screen; where the distinction between

roof and wall are lost, the screen also filters light into the building. Atmospheres with ranging intensities of light volume and function are created. The living space alludes to be bigger, with the space above the room open and the implication of a focal point coming through the north of the building.

The building is narrow with a separate public and a private access. The public walkway runs along the East side and leads straight from the carport to the veranda, while along the western wall is the private walkway path leading to the bedroom and bathroom then finally down into the kitchen. Several openings within the design allow continuous links between spaces making the house free flowing.

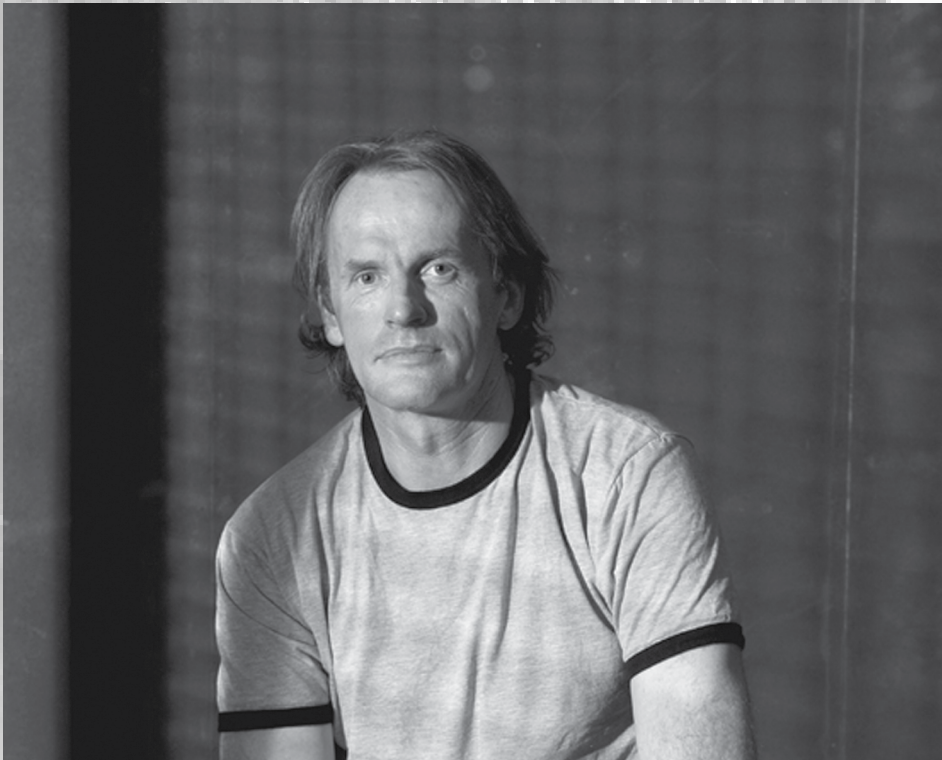
This design is organic, protective and continuously connects to the outdoors.

Exterior Render: Veranda



Architect

Sean Godsell

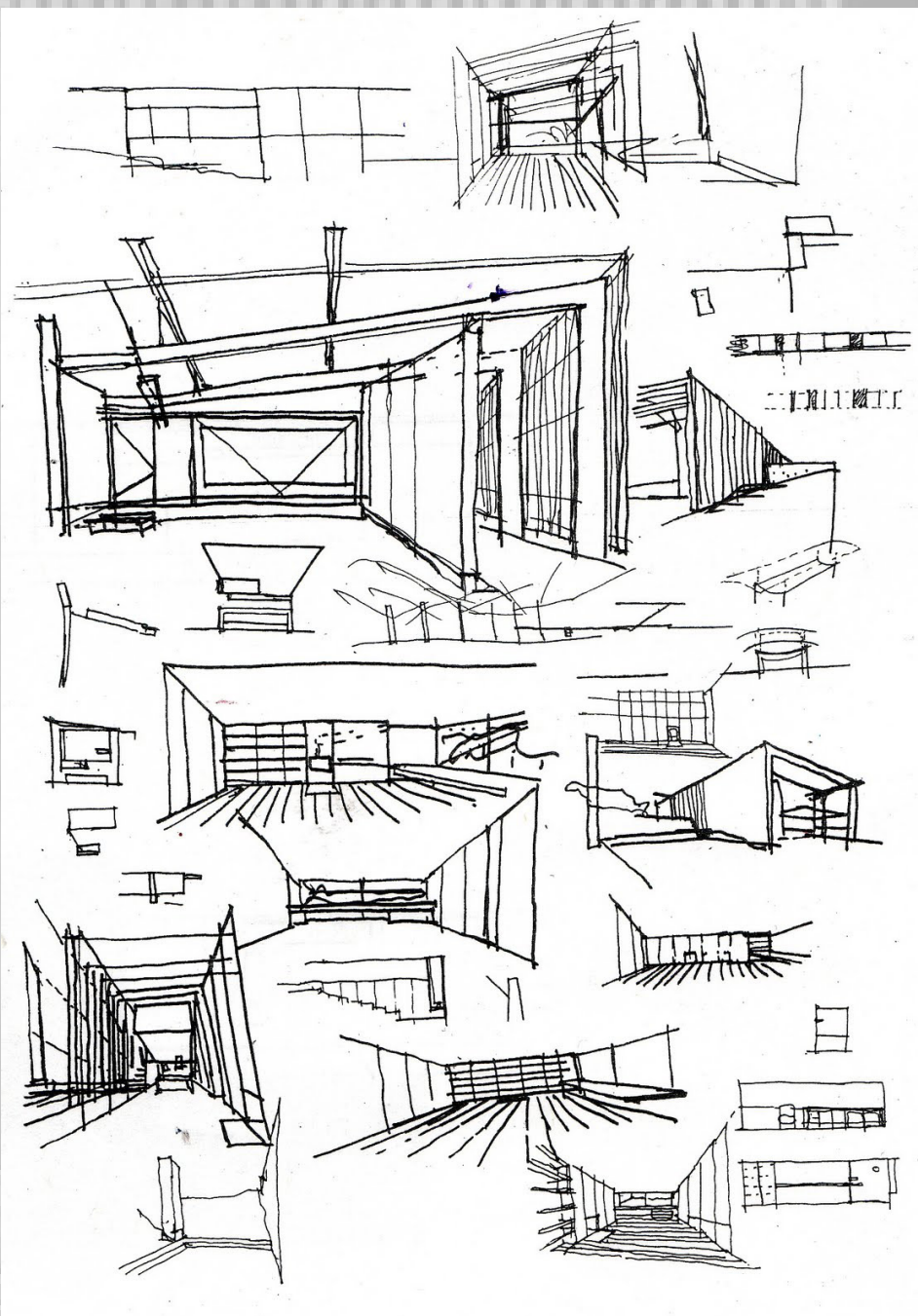


Sean Godsell was born in Melbourne in 1960 graduating from University of Melbourne with First Class Honours. He has won many awards both international and locally. In 2002 the influential English design magazine wallpaper listed him as one of ten people destined to 'change the way we live'. He was the only Australian and the only Architect in the group.

Other Architectural works by Godsell

RMIT Design Hub which has large numbers of ESD features, the most impressive feature of the design is the entire building façade which has the ability to be upgraded as solar technology evolves.

Godsell's Original drawings of Peninsula House



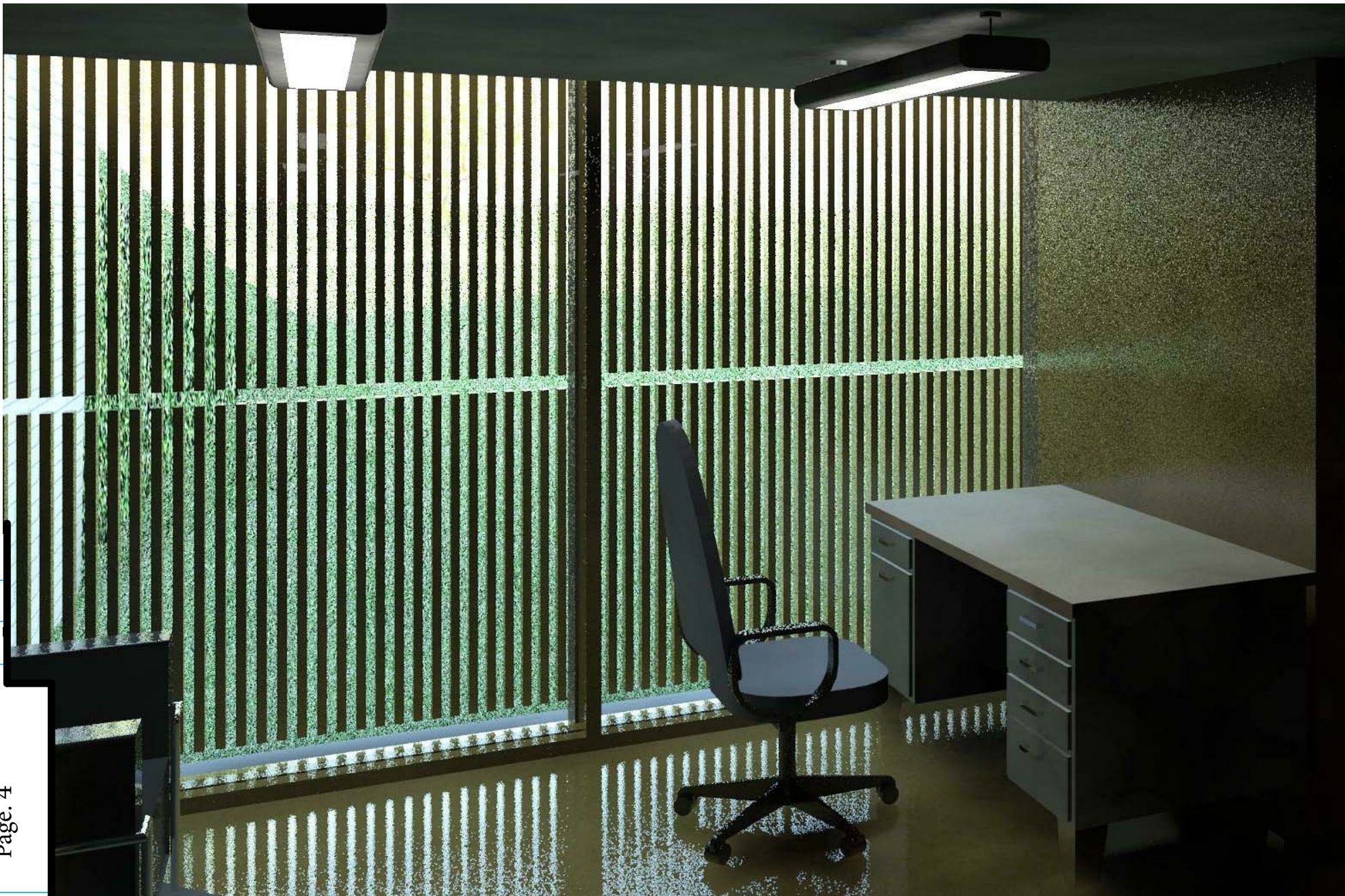
Future Shack is a mass produced relocatable house for emergency and relief housing. Recycled shipping containers are used to form the main volume of the building. Mass production, flexibility, easy installation, self-contained, mobile and reusable are the main qualities of this design.



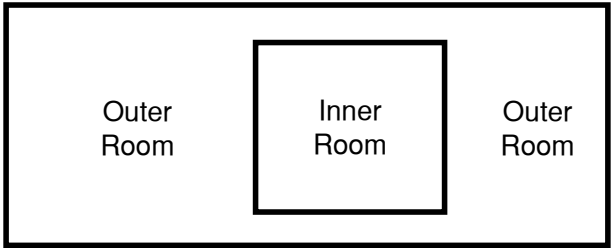
Exterior Render: Opening to Courtyard



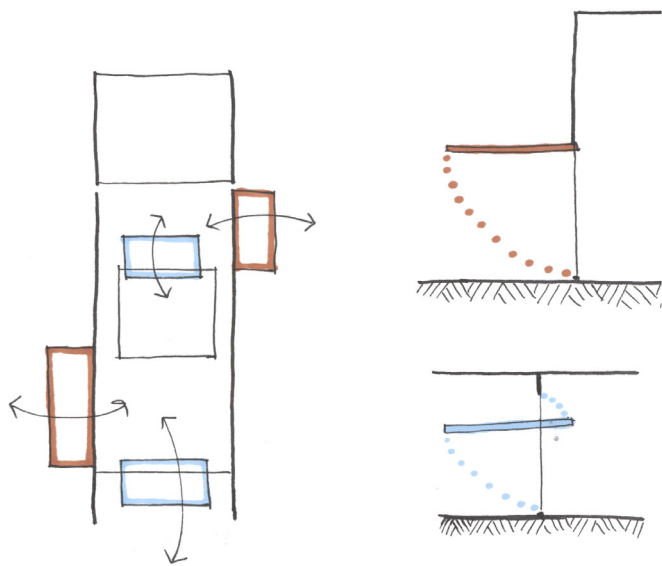
Interior Render: Library



Form



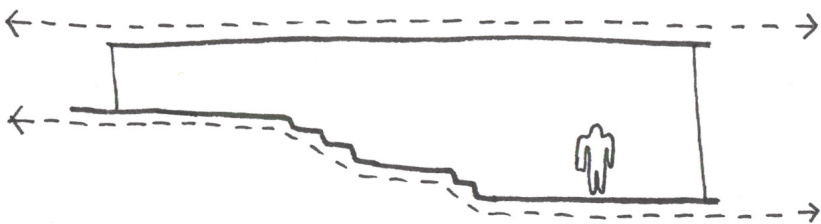
The layout of spaces within the house is based from the Chinese style of architecture of Moya and Hisashi, an inner room inside an enclosed veranda. Godsell uses this concept to differentiate the types of spaces within the design. The corridor spaces on either side of the building serve to enclose the central rooms.



CONNECTION OF SPACES
VIA OPENINGS

- GLASS OPENING
- TIMBER OPENING

There is no distinction between the roof and the walls of the structure. Spaces are connected through vertically pivoting openings providing an interaction between spaces and diffusing their boundaries. These openings add another dimension to the structures form allowing it to be organic; which when open they create protruding canopies and flowing spaces.

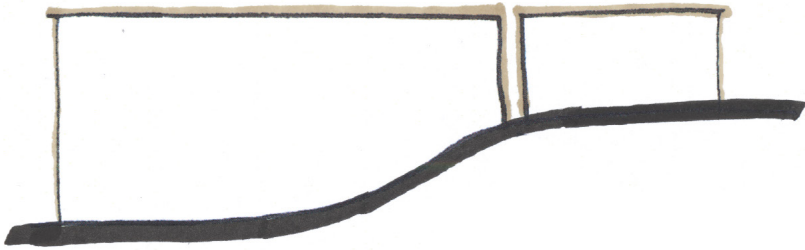


STAIRS VS HORIZONTAL
NATURE OF STRUCTURE

The structure sits horizontal while embedded into the slope. The stairs follow the rugged fall of the land while the roof remains level amplifying the magnitude of the living space.

Space

The primary spaces in the house can be distinguished by dimension and quality of light. The living space is large open and very light, the bedroom is darker and more confined, and finally the library is darker again and even tighter.



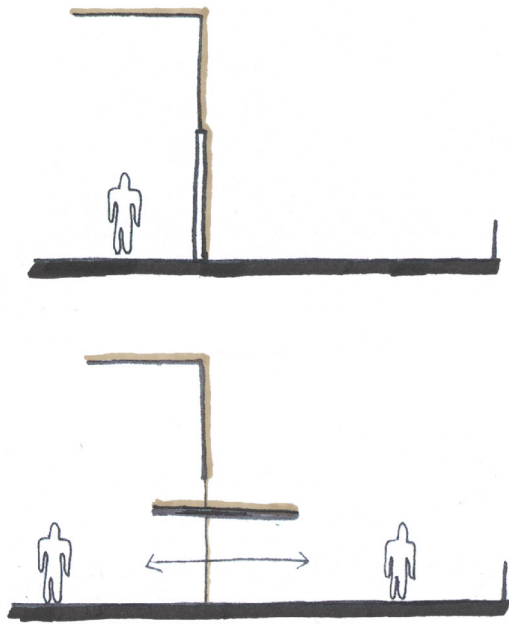
LATERAL SÉPÉRATION OF SPACES

An interesting gap has been created at the rear of the house to separate the living spaces for the service spaces. This 300mm break in the structure allows more than light to penetrate. Rain and wind also flow into the small courtyard adjacent to the bathroom; breaching the distinction between indoor and outdoor. The courtyard itself increases this disconnection between the spaces.

As suggested earlier the indoor courtyard escalates the division between the two types of spaces. The courtyard also extends outside via the opening in the Western wall strengthening the link between interior spaces and the surrounding environment.

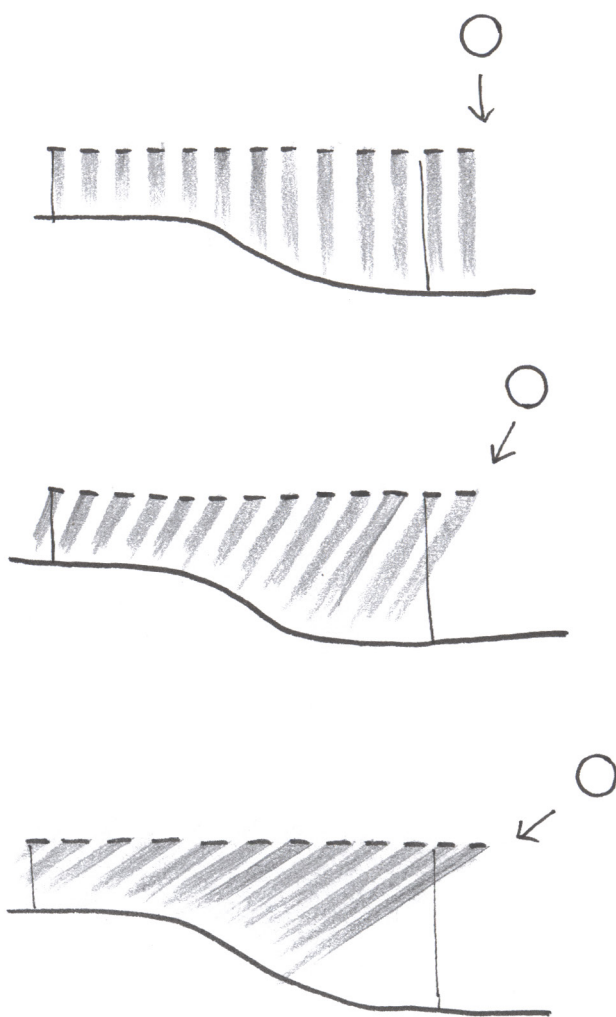


Space



INTERACTION BETWEEN
INDOOR + OUTDOOR SPACES

Spaces are linked through opening walls. Screens which cloud views and thus the connection between spaces are opened to allow spaces to become one. In the case of the living area the wall is transformed into an additional roof developing it into a greater space.

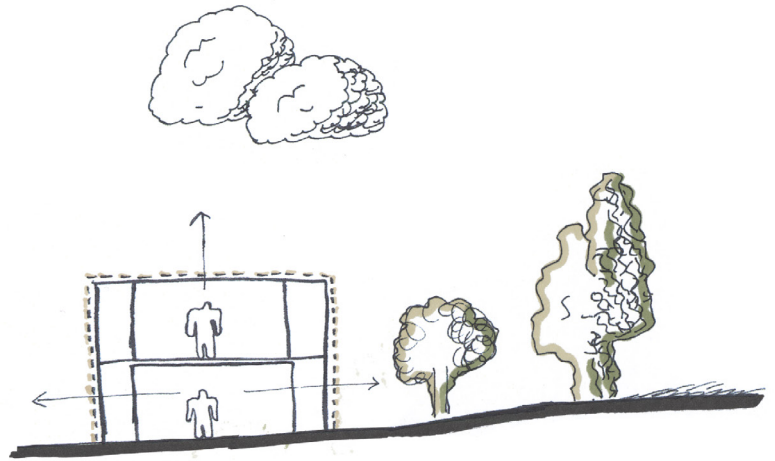


THE SUN AS INFORMATION

Timber screens cast shadows in all spaces of the house. They provide continuous information as to the time of day and time of year as the sun moves across the sky. The sun tells a different story in each part of the dwelling, in the living room it promotes activity and change, in the bedroom it extends the feeling of darkness and in the library the sun plays little roll in the function of the space.

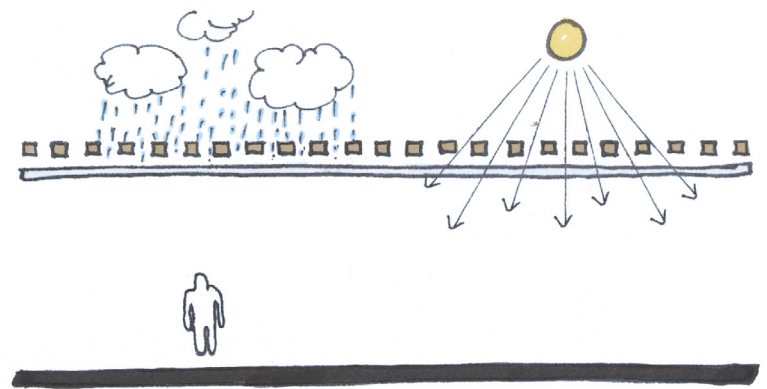
Nature + Movement

Connection Nature is a strong theme within the house, with each room having a firm connection to either the thick vegetation nearby or the sky above. In the case of the living space it is both which increases the important of the space. The bedroom only has a connection to the sky which allows excellent evening veiws to be enjoyed all night.

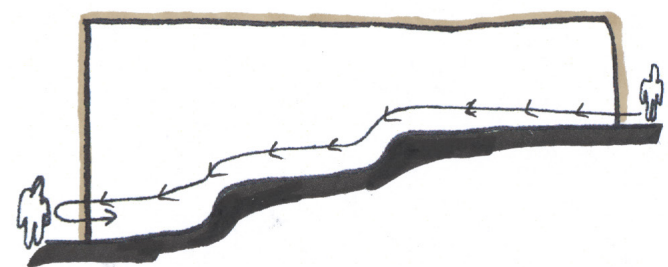


CONNECTION TO NATURE

The interior is protected by the harsh elements outside while still having a strong relation to the environment. The timber shields the harshest of the sun while the glass is an invisible barrier which rain and wind cannot intrude.



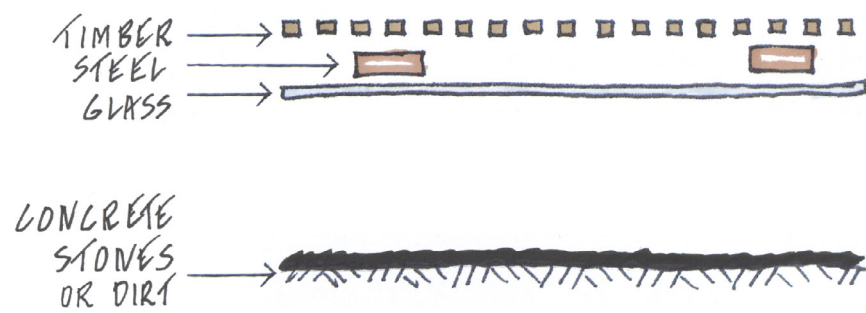
PROTECTION FROM WEATHER



EXTENDED JOURNEY TO ENTRY

Before entering the house the whole length of the structure must first be experienced. The journey brings anticipation as it gradually opens into an exciting and generous space.

Materials



The design is based on only a few basic materials. Vertical timber battens make an outer shell, oxidised steel frame supports the structure and is visible throughout the whole building, and a glass box encloses the spaces within. Steel is also used as the main material for the internal walls. Below your feet are rough materials of concrete, stone or bare earth.



Once again the living space has unique qualities. Timber floors and plenty of white walls accompany the usual glass and timber but less of the steel walls can be found in this space. This produces a calmer more friendly space for daily activities the happen within.



The exterior screen is made up of hundreds of parallel timber battens running up the walls and across the roof. They are an element of both protection and beauty.

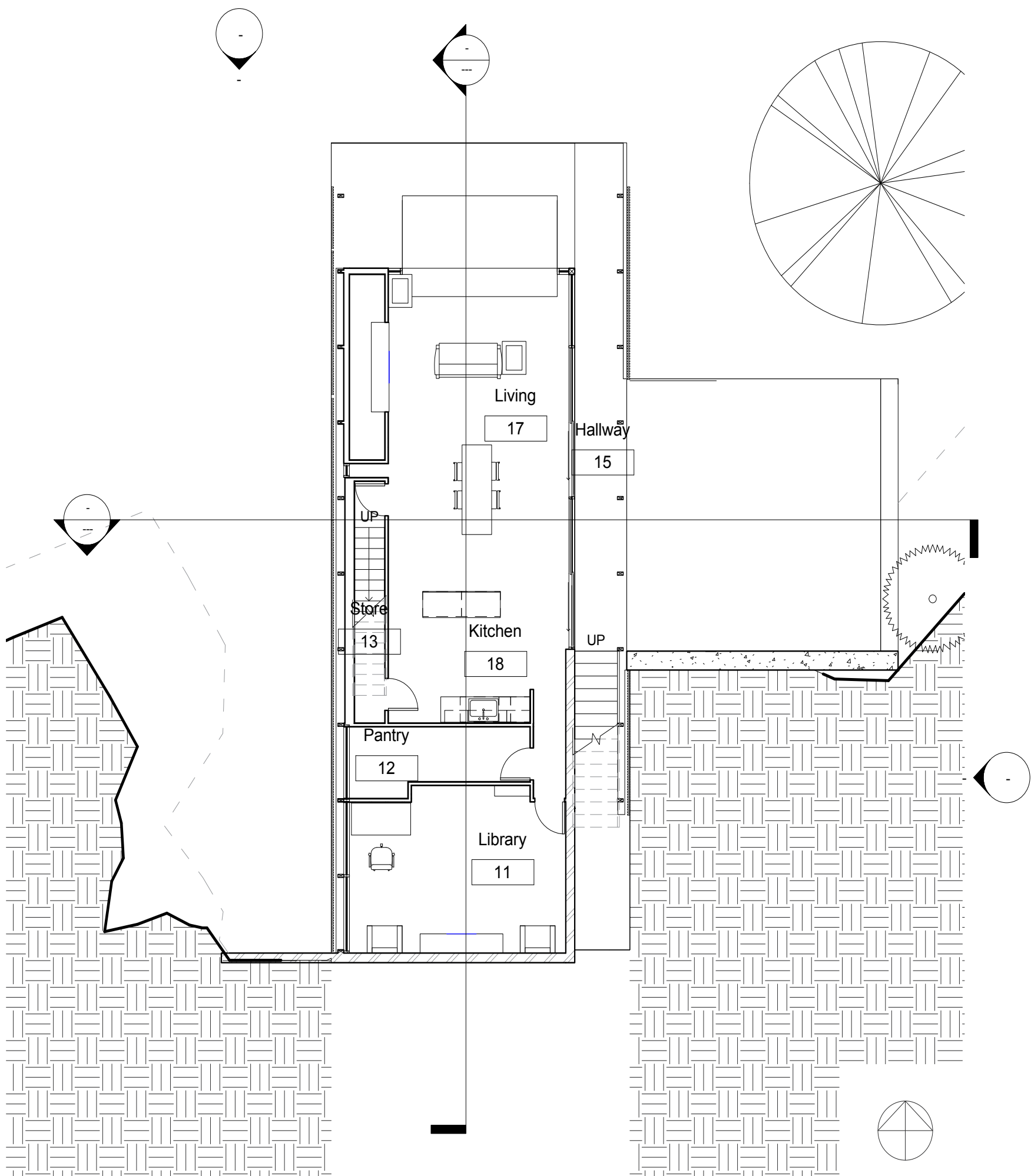
North East Orthogonal Render

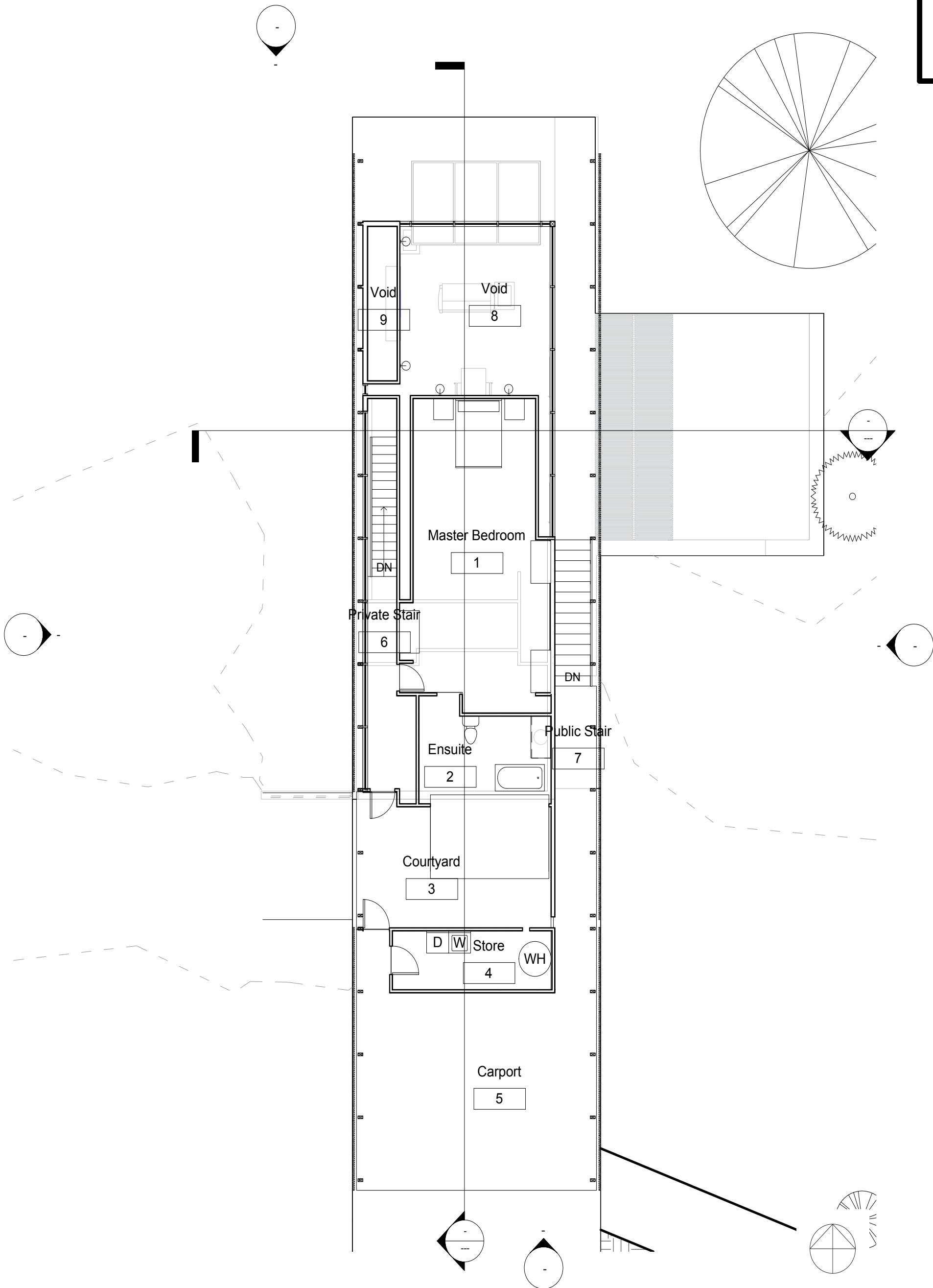




My Drawings

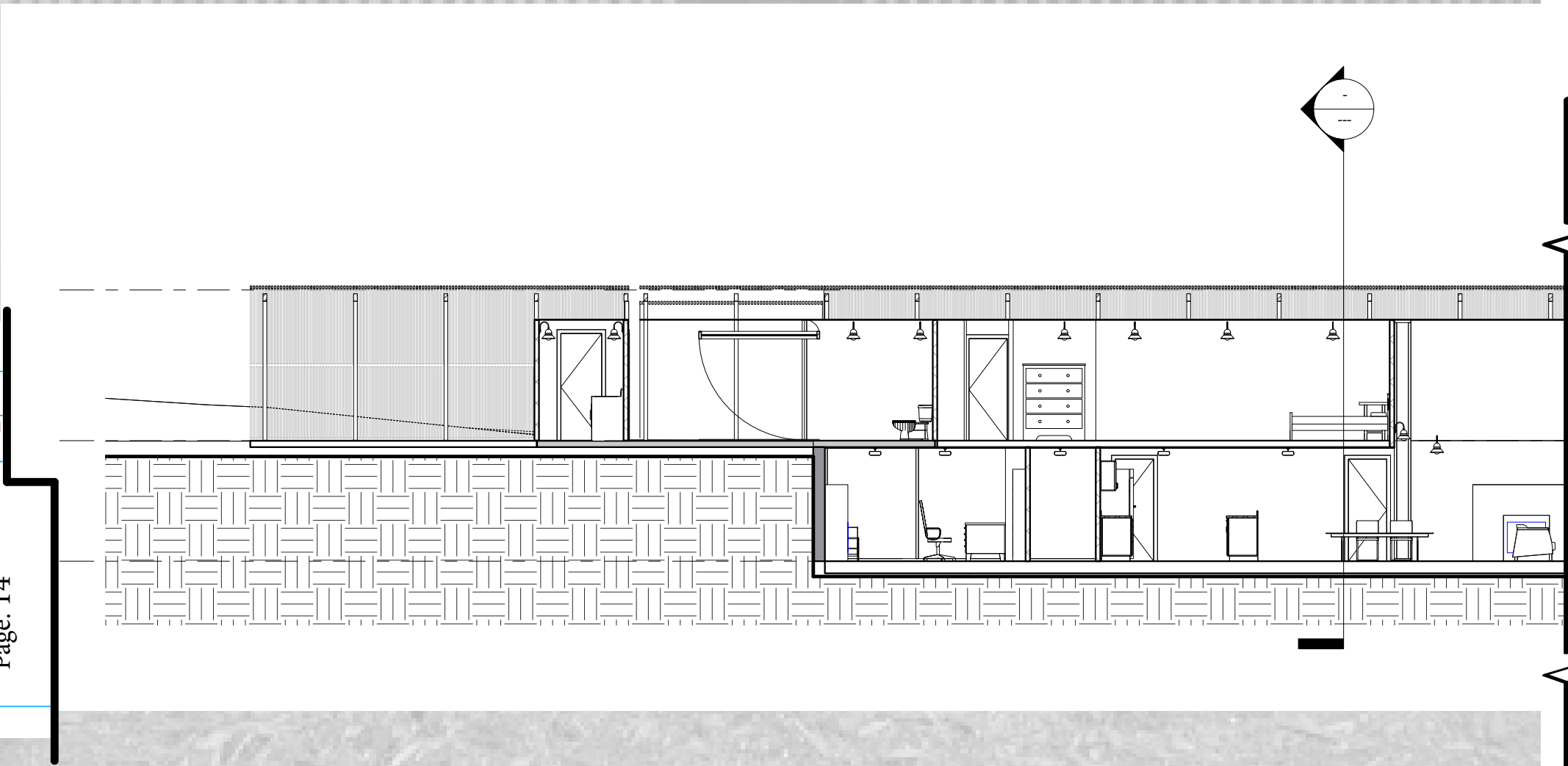
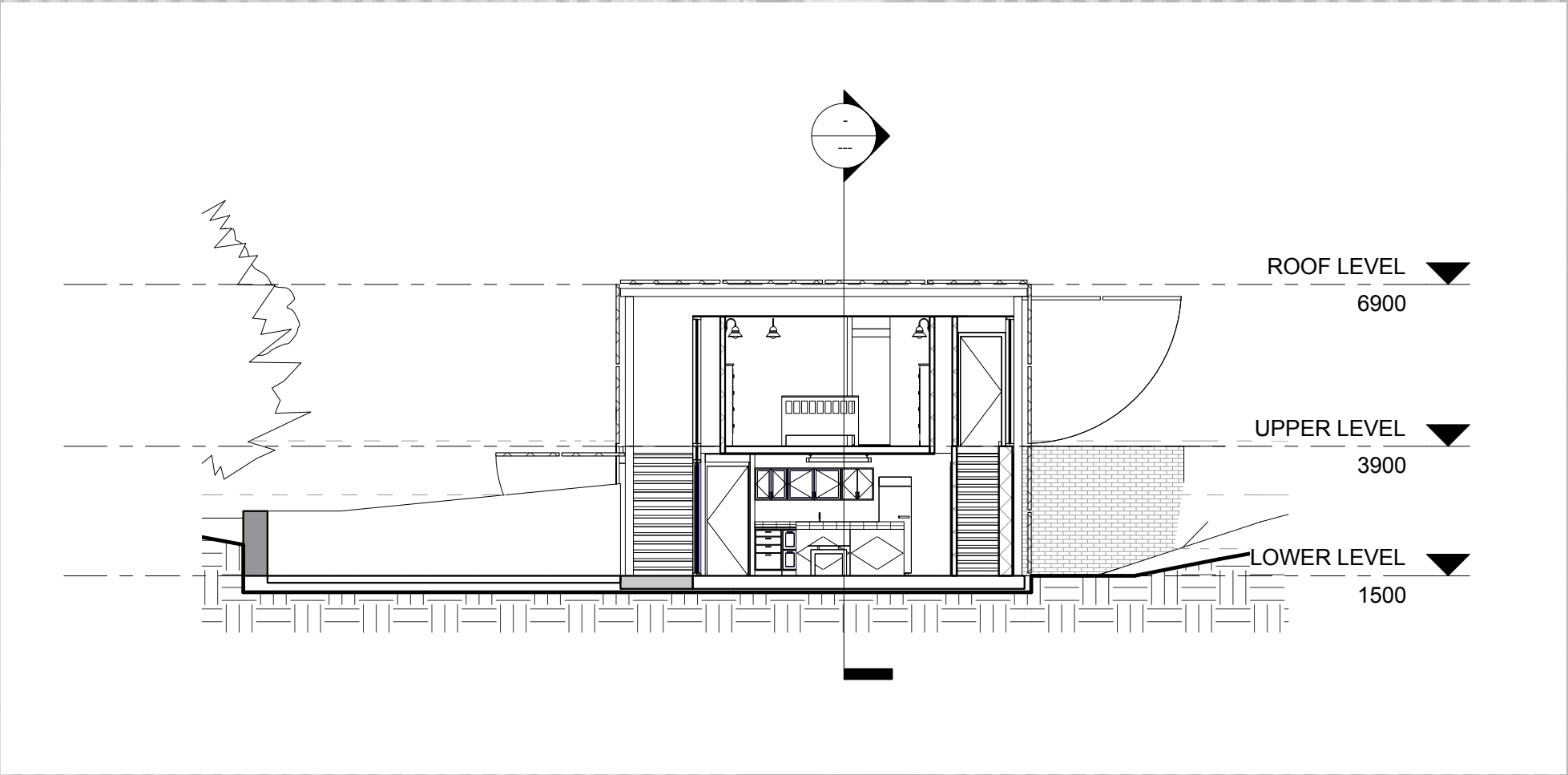
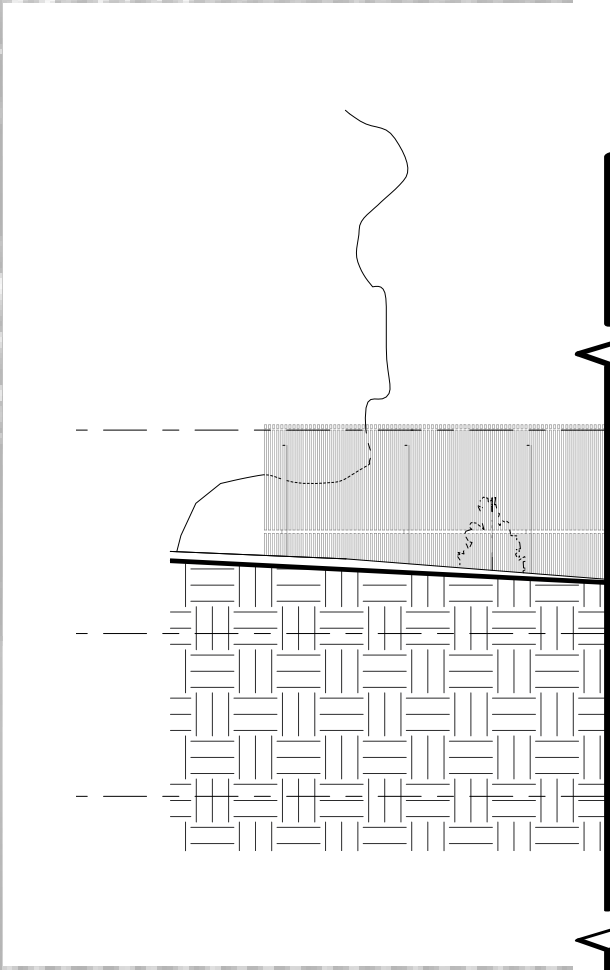
Left: Lower Level Plan
Right Upper Lever Plan

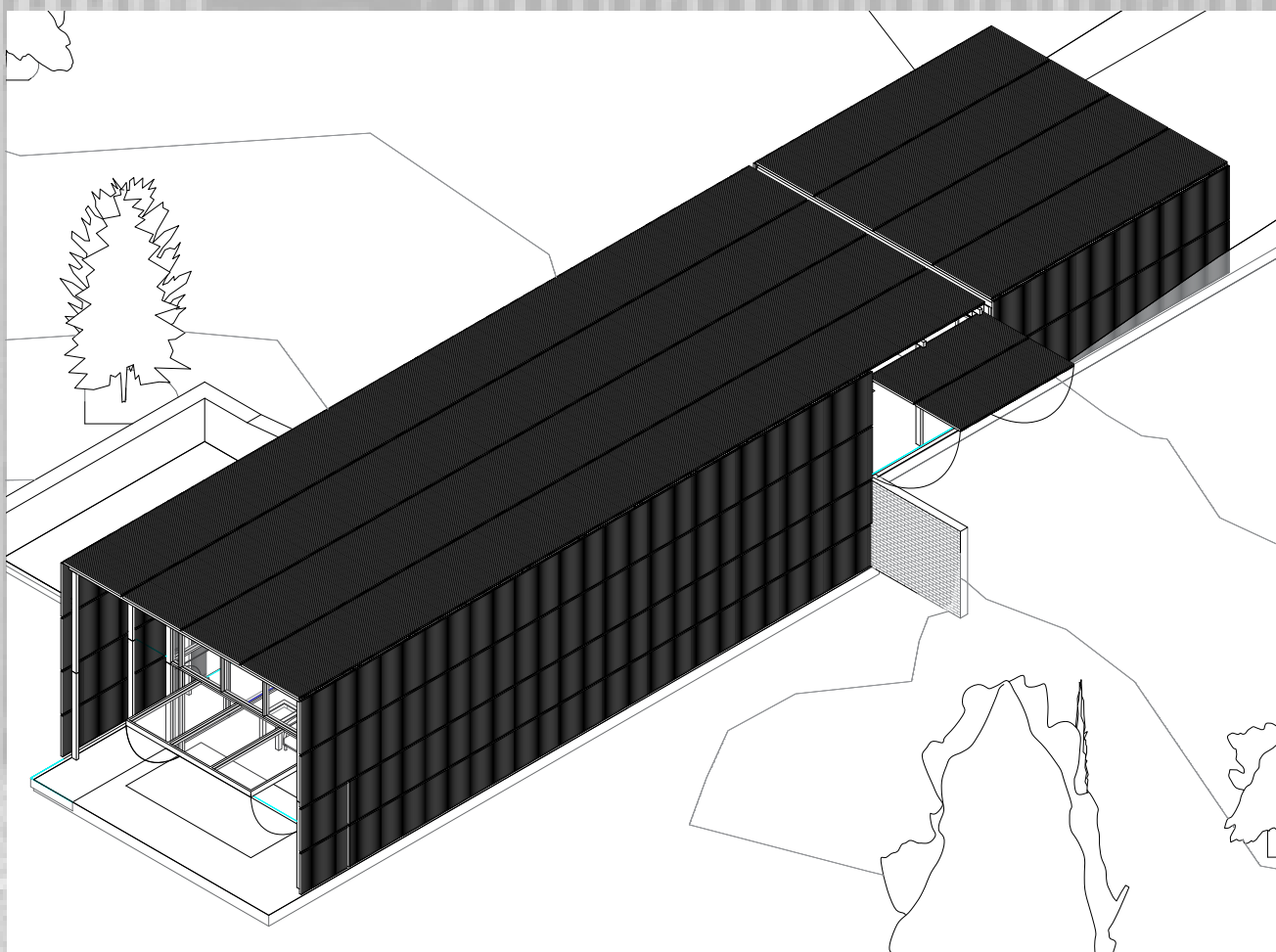
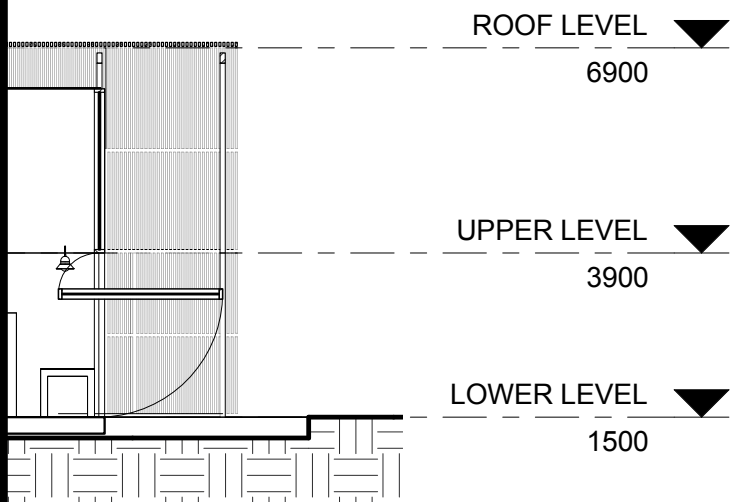
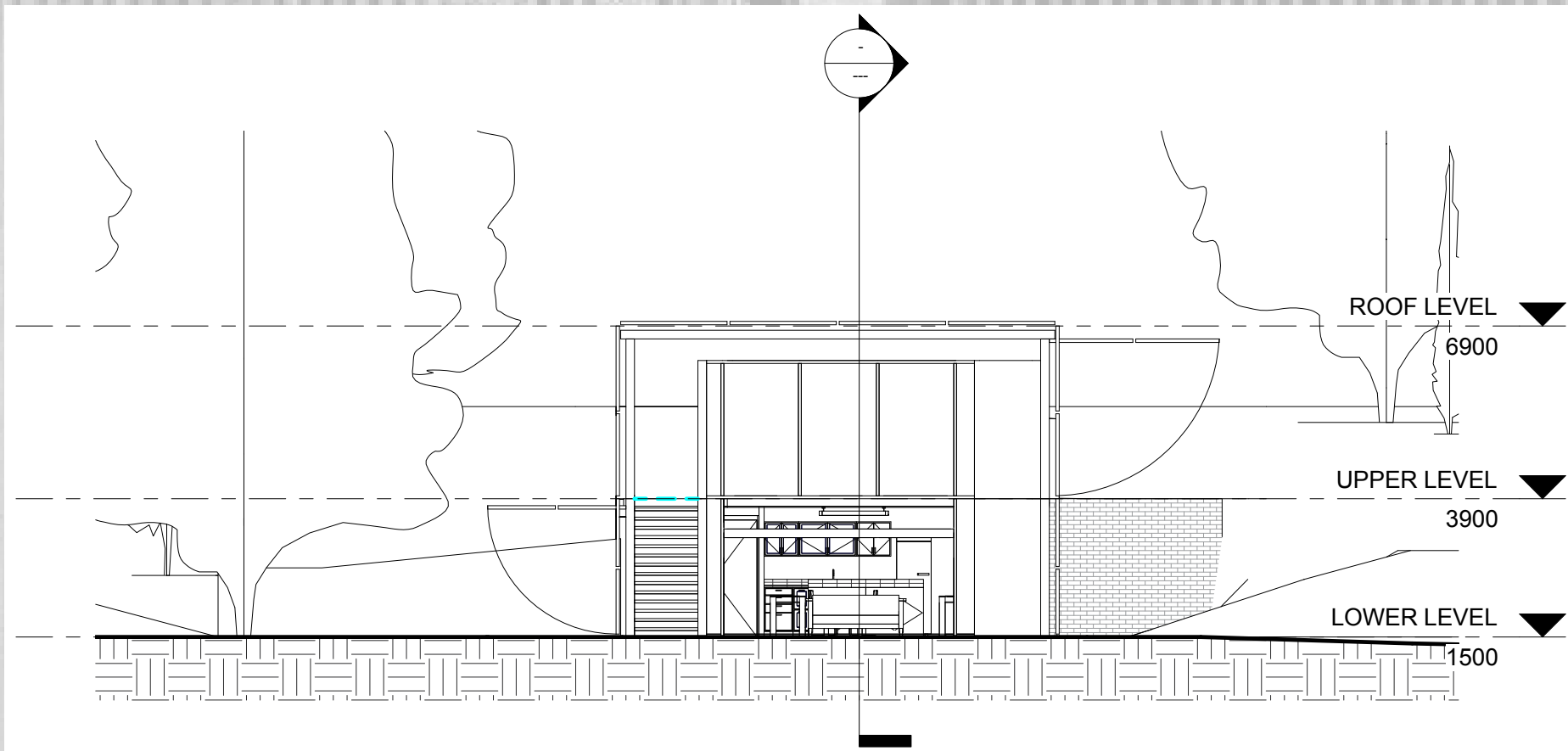
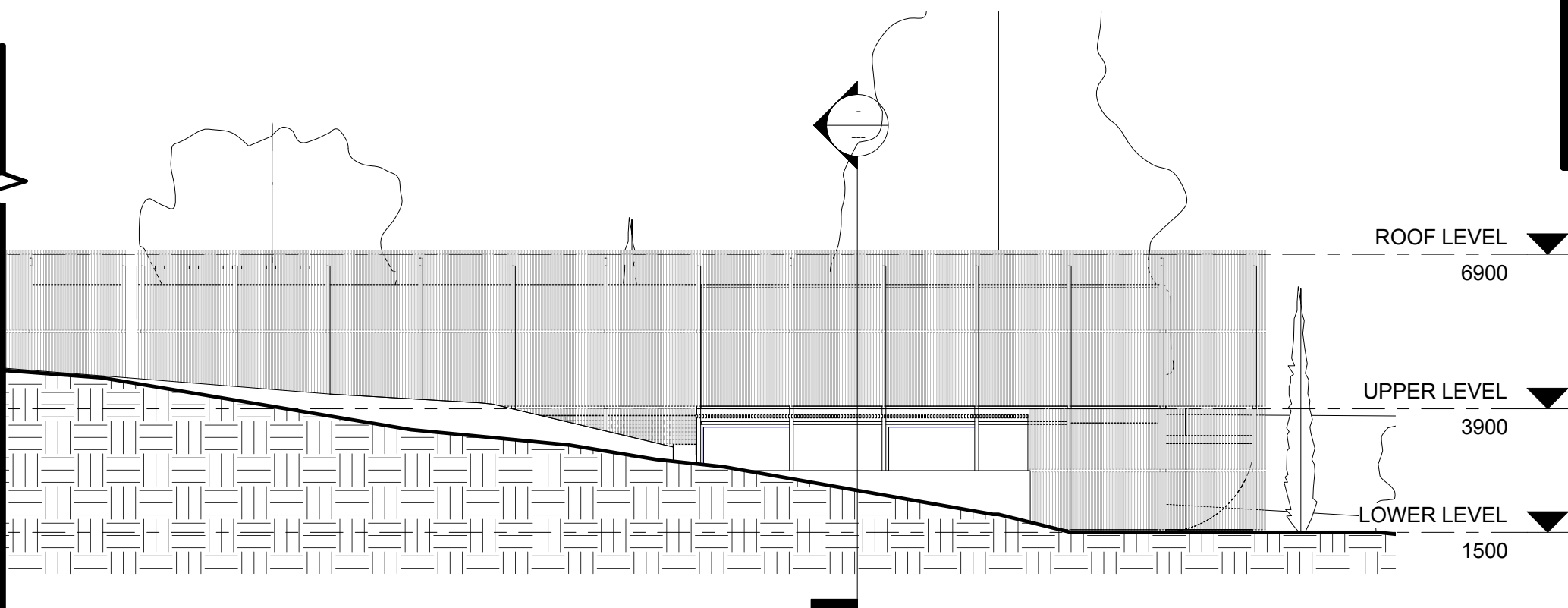




My Drawings

- Top: East Elevation
- Right: North Elevation
- Left: Section 2
- Bottom Left: Section 1
- Bottom Right: North West Orthographic View





Interior Render: Kitchen



Exterior Render: Living Space



Conclusion

The design comprises of a simple layout of two inner rooms (the bedroom and library) and an outer room (the living room) which Godsell bases off traditional Chinese architecture, these rooms are also distinguished by volume and light.

The living space is a very important in the design. It use different materials, is the largest of all the spaces and can become greater with openings in multiple directions, light and shadows are used to flood the space with activity.

The design has a changeable form, the walls transform into roofs allowing for greater connection between spaces and a

dynamic design.

The structure sits in the side of the sloping site but remains horizontal, this has an influence on how movement and light reacts to the space.

Simple materials are used to create an opaque exterior which protects while keeping the firm link between interior and nature.

Overall the design is dynamic with spaces both clearly divided yet strongly joined while nature maintains a continuous presents throughout.

Interior Render: Bathroom and Courtyard



Photo: Kitchen



Photo: Wall Break

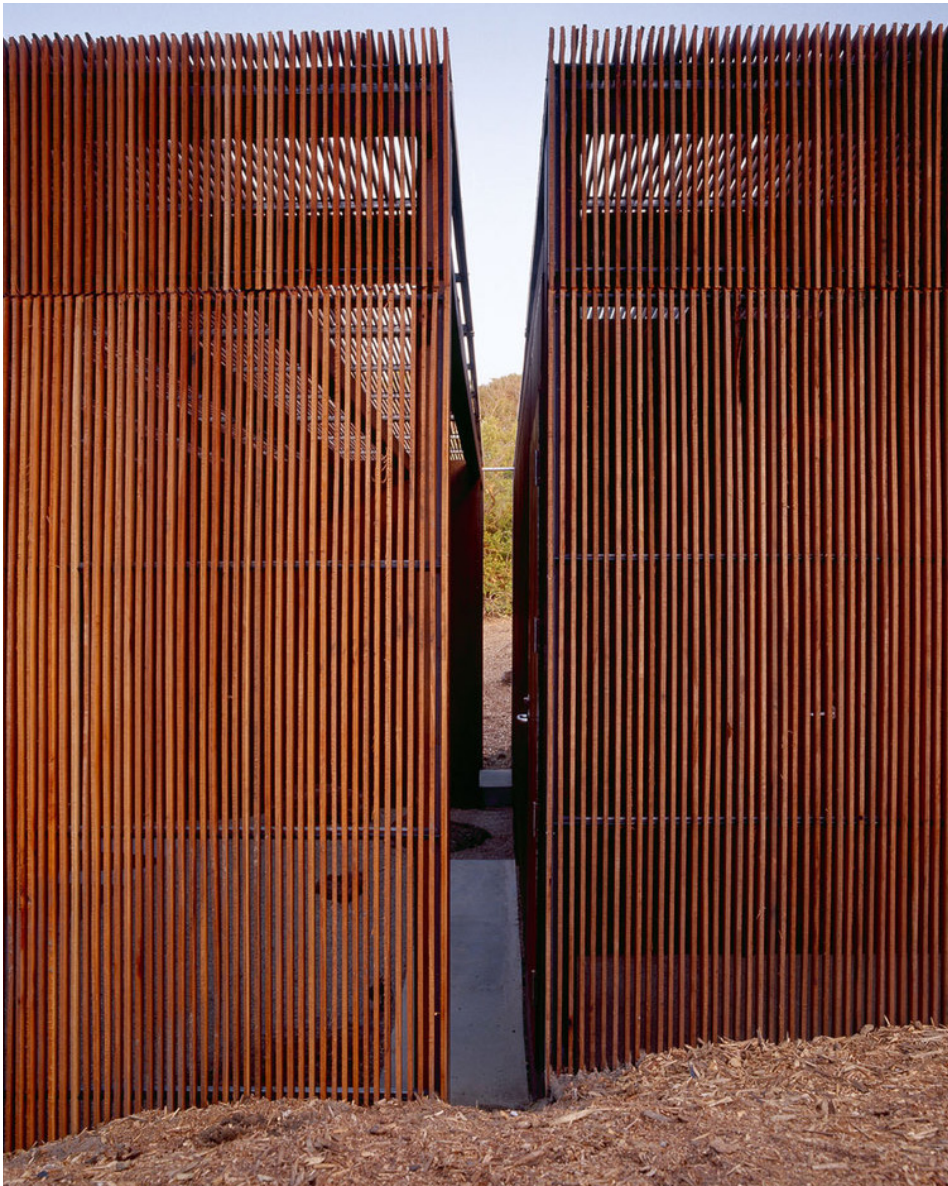


Photo: Outdoor Living Space Unconnected and Connected Through Opening





Peninsula House

Designed By Sean Godsell

Drawn By Scott Beeby
s2806118
Griffith University

Advanced Presentation Skills
2906ENV
Assignment #4